



S 375 G
horizontal grinding machine

Horizontal grinding machine S 375 G



The Samputensili horizontal grinding machine S 375 G is based on a modular design concept, with a wide range of options and it is engineered to suit your individual needs, guaranteeing you efficient, top quality manufacture.

This universal machine is ideally suited to grind external spur and helical gears, crown gears, worms, rotors for air compressors and screws for hydraulic pumps with form-grinding wheel and single index profile grinding.

Optionally it is also possible to grind spur or helical internal gears.

We can offer you ad hoc solutions for any of the above applications so that your machine is manufactured with the right options for you.

The S 375 G is supported by special software packages, which translate our know-how into your manufacturing success.

Particular attention has been paid to the state-of-the-art solutions that allow a fast and cheap tool change.

+ Electrowelded, heavily ribbed machine bed for vibration-free operation even at high stock removal rates.

+ The working axis X and the dressing axis Z are directly driven by digital linear motors with flat-prismatic guides. No play or backlash for an absolutely wear-free drive system.

+ Direct-driven, liquid-cooled torque motor for the C axis (workpiece table) supported by hybrid ball bearings (ceramic balls) for extremely high runout accuracy. High-precision angular encoders.

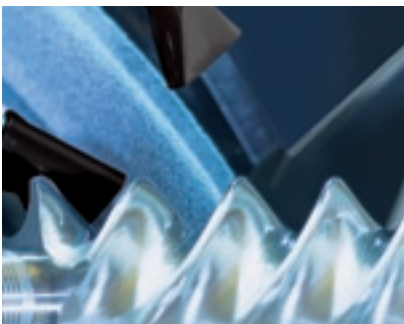
+ Measuring unit with touch probe and software for checking profile, lead, pitch and tooth thickness.

+ Integrated CNC dressing spindle for dressable CBN and ceramic tools, using a diamond dressing wheel to dress any kind of profile.

+ Siemens 840 D CNC with mobile operator panel, circular and linear interpolation of up to 4 axes.

+ Samputensili Dialogue Software for the flexible generation of a practically infinite number of different profiles, management of grinding/dressing cycles and storage of process/profile data without the need for an external PC.

+ Short setup time to switch from gear grinding to rotor or screw grinding.



Rotor grinding with a corundum wheel



Grinding of helical internal gear

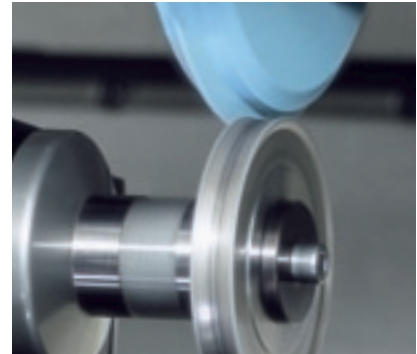


Grinding large module gears with electroplated CBN grinding wheel

Technical data

Workpiece diameter, max.	mm	375
Module, max.	m_n	15
Helix angle (autom. positioning), max.	degree	+/- 90
Workpiece length, max.	mm	1,000
Workpiece length to be ground, max.		
- wheel \varnothing , max. / workpiece \varnothing , max.	mm	600
- ext. wheel \varnothing , max. / ext. workpiece \varnothing , min.	mm	400
Grinding spindle speed, max.	min^{-1}	18,000
Grinding spindle power output	kW	20
Total connected load of machine	kVA	50
Machine dimensions, L x W x H	m	3.70 x 2.30 x 2.00

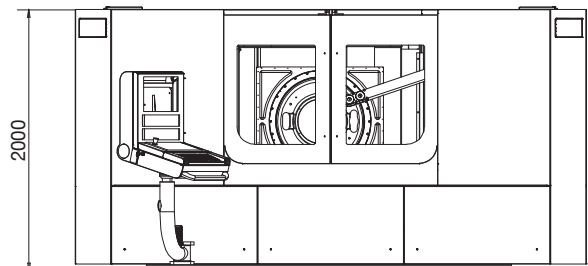
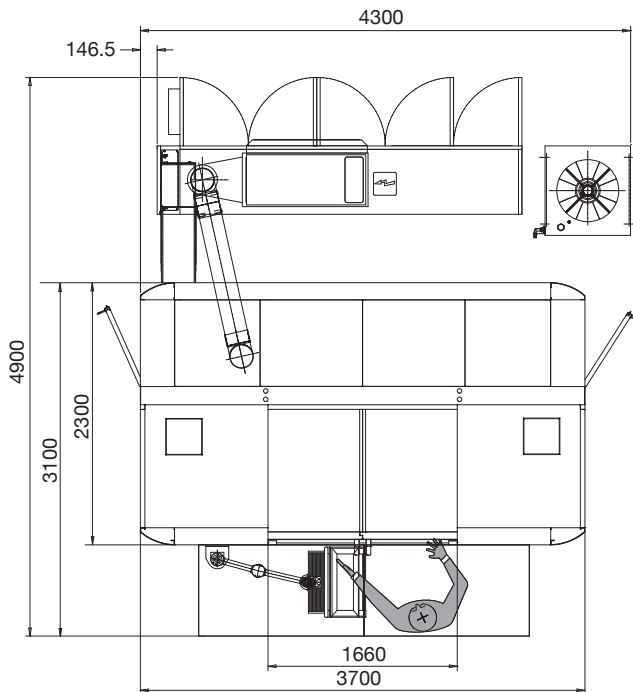
Technical data subject to change.

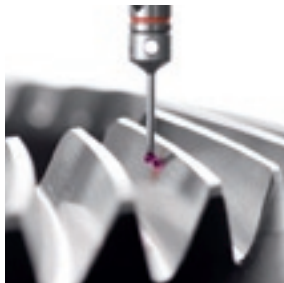
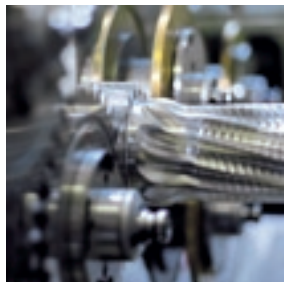
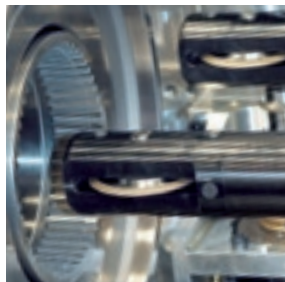
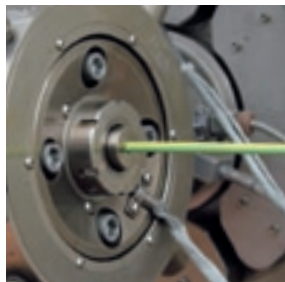
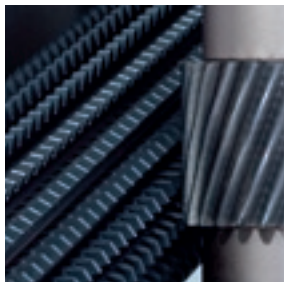


Integrated dressing of grinding wheels



Integrated measuring of internal workpieces





SAMP S.p.A.
Via Saliceto, 15
40010 Bentivoglio (BO)
Italy
Tel.: +39 (051) 63 19 411
Fax: +39 (051) 37 08 60
info@sampspa.com

Samputensili Beijing
Room 1801/1802, Jing Tai Tower,
No. C24 Jian Guo Men Wai Avenue
100022 Beijing, P.R. China
Tel.: +86 (010) 6515 6349 - 6515 6350
Fax: +86 (010) 6515 7150
beijing@samputensili.cn

Star SU LLC
5200 Prairie Stone Parkway, Suite 100
Hoffman Estates, IL60192
USA
Tel.: +1 (847) 649 1450
Fax: +1 (847) 649 0112
sales@star-su.com

Samputensili GmbH
Marienberger Str. 17
09125 Chemnitz
Germany
Tel.: +49 (0371) 576 257
Fax: +49 (0371) 576 259
contact@samputensili.com

SU Korea Co. Ltd.
4 MA- 319 Sihwa Industrial Complex
703-12, Sung-Gok Dong An-San City
Kyungki-Do, Rep. of Korea
Tel.: +82 (031) 497 18 11
Fax: +82 (031) 497 18 15
samputensili@naver.com

Samputensili do Brasil Ltda.
Rod. Dom Gabriel Paulino
Bueno Couto Km 66,3 - C.P. 849
CEP13201 - 970 Jundiá, SP, Brazil
Tel.: +55 (011) 21 36 5199
Fax: +55 (011) 4582 7921
brasil@samputensili.com.br

Samputensili France S.a.r.l.
79 rue de la Tour
42000 Saint Etienne Cedex
France
Tel.: +33 (0477) 92 80 50
Fax: +33 (0477) 93 72 03
info@samputensili.fr